



**BestWAY**  
**Traders** (Pvt.) Ltd.  
Manufacturer, Importer, Exporter & General Order Supplier



## Fire Fighting Safety & Security Equipments

*Safety Ever, Fires Never....!*





**Bestway**  
Traders (Pvt.) Ltd.  
Manufacturer, Importer, Exporter & General Order Supplier

## Awards & Certificates





**BestWAY**  
Traders (Pvt.) Ltd.  
Manufacturer, Importer, Exporter & General Order Supplier



## COMPANY PROFILE

Best Way Traders is one of the best Manufacturer Fire Fighting & Safety equipments company in Pakistan. We have taken our expertise & experience into the nationwide market to establish a reputation for excellence and customer support.

Our approach to each project from different technical angles ensures extensive and complete solution. We are dedicated to make certain the success of the projects.

We have never left working with best companies in their field to reduce the fire risk to minimum in living spaces and industrial areas. All the goods and services we offer to our client certified by internationally recognized certification bodies.

We are committed to deliver high quality goods and services which fully meets our customer's needs for quality assurance together with ISO 9001:2015 requirements and we constantly seek ways to improve our quality continuously and ensure its continuity. For each undertaken project, we design a unique quality management system and make sure this system responds to the requirements of the projects from start to finish.

Outstanding business performance requires outstanding HSE performance. The health and wellbeing of our operations are carried out in a manner that protects the environment and community in general.

We are confident that you will find our presentation of interest and assure you of our competence and desire to realize your contract in away totally satisfactory to you.

## OUR VISION

The population of the world is rapidly growing and so that our common life spaces are growing too. It is getting more important to prevent these common spaces from one of the biggest disasters.

We have tried to reflect specializing and did the best in all our projects as a result of globalism. It is always our aim to catch the latest technology and information to our country with our dynamic staff. We have never left working with Specialist Engineers and qualified staff in our technical and commercial applications to reduce the fire risk to minimum in living spaces and industrial areas.

We work understanding of combination of the cooperation with the world's most famous Fire Prevention companies and our manufacturing opportunities.

Our main aim is to give better service, manufacture more qualified and various products with our Research & Development mentality which is the essential need for understanding modern management and production.

We are willing to improve the understanding of Fire Security to the level of developed countries.

In this way; our method is to develop our country by using the raw material, productive power and information of our country to our projects and manufacturing.



## Fire Extinguisher Dry Chemical Powder (DCP)

Dry powder fire extinguishers are a highly versatile Class A, B & C fire-fighting medium suitable for most risks. In addition to dealing with electrical hazards, flammable liquids and gases, powder is also effective for vehicle fires.



Model Number	BW-P-01	BW-P-02	BW-P-04	BW-P-06	BW-P-12	BW-P-25	BW-P-50	BW-P-100
Extinguisher Capacity	1-KG	2-KG	4-KG	6-KG	12-KG	25-KG	50-KG	100-KG
Fire Rating	5A/34B/C	8A/55B/C	13A/89B/C	27A/144B/C	55A/233B/C	55A B/C	55A B/C	57A B/C
Working Pressure	@15 BAR							
Test Pressure	@25 BAR							
Range of Discharge	4-5 M	5-7 M	6-7 M	6-8 M	6-8 M	7-8 M	7-8 M	7-8 M
Duration of Discharge	4-6 Sec.	6-8 Sec.	13-15 Sec.	18-20 Sec.	28-30 Sec.	30-35 Sec.	40-45 Sec.	70-80 Sec.
Operating Temperature	-20 °C to +60°C							
Filling / Propellant	ABC 40% Powder + Nitrogen Gas							
Cylinder Material	Milage Steel (MS)							
Gross Weight	1.7/kg	2.8/kg	5.6/kg	8.5/kg	16.5/kg	42.5/kg	78.5/kg	140/kg
Finishing	Powder Coating UV Resistance							

## Fire Extinguisher Carbon Dioxide (CO<sub>2</sub>)

Fire ratings provide a means of measuring the effectiveness of an extinguisher in terms of the maximum size of fire that can be extinguished. Class B is related to fire surface area and the rating figure to the quantity of flammable liquid in a ratio of 1/3 water, 2/3 fuel that can be extinguished in a circular tray. Gas is harmless to delicate equipment and materials. Ideal for modern office environments, all electronic risks, and where oils, spirits, solvents and waxes are in use.



Model Number	BW-C-02	BW-C-03	BW-C-05	BW-C-07	BW-C-10	BW-C-20	BW-C-40
Extinguisher Capacity	2-KG	3-KG	5-KG	7-KG	10-KG	20-KG	40-KG
Fire Rating	34B	34B	55B	113B	183B	233B	233B
Working Pressure	@ 174 BAR						
Test Pressure	@ 250 BAR						
Range of Discharge	4-5 M	5-6 M	6-7 M	6-8 M	6-8 M	7-8 M	7-8 M
Duration of Discharge	7-8 Sec.	8-10 Sec.	12-15 Sec.	17-20 Sec.	22-25 Sec.	40-45 Sec.	80-90 Sec.
Operating Temperature	-30°C to +60°C						
Filling Charge	Carbon Dioxide						
Cylinder Material	Carbon Steel						
Finishing	Powder Coating UV Resistance						



## Fire Extinguisher AFFF-Foam, Water Type

### AFFF-Foam

Spray Foam fire extinguishers provide a fast, powerful means of tackling 'A' and 'B' class fires. Highly effective against petrol and volatile liquids, forming a flame smothering seal over the surface and preventing re-ignition. Ideal for multi-risk usage. Fire ratings provide a means of measuring the effectiveness of a fire extinguisher in terms of the maximum size of fire that can be extinguished.

### Water Type

Water is still one of the most useful of all available fire extinguishants. It works through its cooling effect on fire, and under pressure from a controllable-discharge extinguisher, can penetrate and knock out deep-seated Class A fires. Fire ratings provide a means of measuring the effectiveness of an extinguisher in terms of the maximum size of fire that can be extinguished.



Model Number	BW-F/W-10	BW-F/W-25	BW-F/W-50	BW-F/W-100	BW-F/W-200
Extinguisher Capacity	10-Liter.	25-Liter.	50-Liter.	100-Liter.	200-Liter.
Fire Rating	34B	34B	55B	113B	183B
Working Pressure	@ 15 BAR				
Test Pressure	@ 25 BAR				
Range of Discharge	4-5 M	6-8 M	6-8 M	6-8 M	6-8 M
Duration of Discharge	20-25 Sec.	40-45 Sec.	60-65 Sec.	120-130 Sec.	250-260 Sec.
Operating Temperature	-20°C to +60°C				
Filling Charge	Aqueous film forming foams / Water + Nitrogen				
Cylinder Material	Milage Steel / Stainless Steel				
Finishing	Powder Coating UV Resistance / Chroming				

## Fire Extinguisher Halotron

Halotron is a clean extinguishing agent that are discharged either as a rapidly evaporating liquid or gas that leaves no residue, by minimizing or eliminating potential agent-related damage to valuable assets like electronic equipment, machinery, etc..



Model Number	BW-H/01	BW-H/02	BW-H/04	BW-H/06	BW-H/10	BW-H/12
Extinguisher Capacity	1-KG	2-KG	4-KG	6-KG	10-KG	12-KG
Total Weight	1.8-kg	3.6-kg	5.8-kg	8.5-kg	13.5-kg	16.5-kg
Working Pressure	@ 15 BAR					
Test Pressure	@ 25 BAR					
Range of Discharge	4-5 M	4-5 M	5-6 M	5-6 M	5-6 M	5-6 M
Duration of Discharge	6-8 Sec.	9-11 Sec.	13-15 Sec.	16-20 Sec.	20-22 Sec.	22-26 Sec.
Operating Temperature	-20°C to +60°C					
Filling Charge	Halotron + Nitrogen					
Cylinder Material	Milage Steel (MS)					
Finishing	Powder Coating UV Resistance / Chroming					



## Automatic Fire Extinguisher

These automatic powder fire extinguishers are designed for installation in larger areas where an increased discharge range is required. When the temperature reaches 68°C the extinguisher unit automatically discharges, releasing the powder agent and smothering the fire. The units are ideal for applications such as engine compartments, engine rooms and storage areas.



Model Number	BW-AP-04	BW-AP-06	BW-AP-09	BW-AP-12
Extinguisher Capacity	4-KG	6-KG	9-KG	12-KG
Fire Rating	21A/144B/C	21A/144B/C	27A/183B/C	34A/233B/C
Working Pressure	@12 BAR			
Test Pressure	@25 BAR			
Protection Area (Meter)	R≥0.94	R≥0.94	R≥1.08	R≥1.18
Duration of Discharge	8-10 Sec.	13-18 Sec.	18-22 Sec.	26-30 Sec.
Starting Temperature	68°C			
Filling / Propellant	ABC 40% Powder + Nitrogen Gas			
Cylinder Material	Milage Steel (MS)			
Finishing	Powder Coating UV Resistance			

## Automatic Fire Ball

Fire Extinguisher Ball is light and portable which could extinguish the initial fire. It is made of the water-proof plastic shell and filled up with harmless environmental powder. It is a fully automatic fire extinguisher. When thrown or rolled into the fire, it will get burst and extinguish the fire immediately.

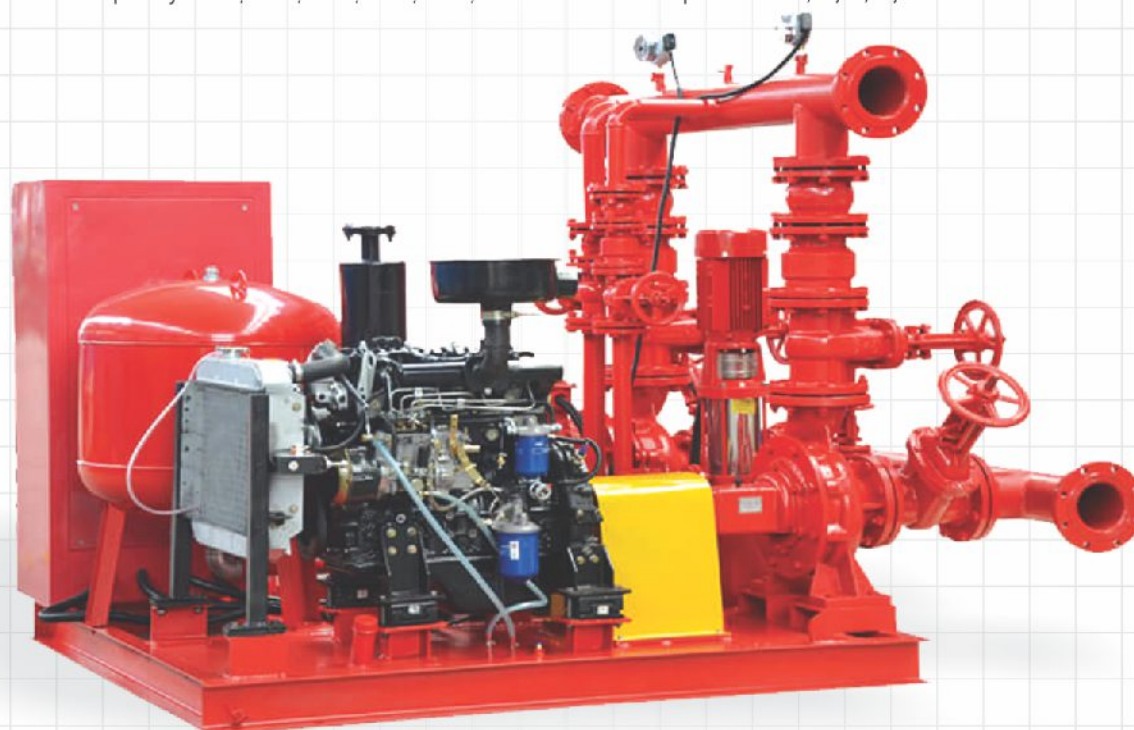


Product Name	Fire Extinguisher Ball
Fire Ball Gross Weight	1.30-kg - 1.50kg
Dimension	Sphere, Diameter 14.5cm
Chemical Weight	1.25-kg
Filling / Propellant	Non-Toxic Mono Ammonium Phosphate
Fire Rating	Class A,B,C
Function	Flame Activated
Finishing	Outer Layer of Pent Foam , About 11mm Thick Shield by PVC Film



## Fire Fighting Pump Set

Fire Pump system is made of Electric+Diesel+Jockey  
Operation: 1 Duty (electric) + 1 standby (diesel engine) + 1 Jockey  
Capacity: 100, 200, 300, 500, 750, 1000...GPM with pressure 4, 5, 6, 8, 10. Bar.



### Performance Chart

200GPM @ 6-BAR					
Pump	Model	Capacity(GPM)	Head(BAR)	Power(KW)	Material
Electric	XBD6/10-65L(65-250)	200	6	15	Cast Iron
Diesel Engine	XBC4/5-IS	200	6	22	Cast Iron
Jockey	CDL4-90	20	7	2.2	SS304
500GPM @ 8-BAR					
Pump	Model	Capacity(GPM)	Head(BAR)	Power(KW)	Material
Electric	XBD8/30-100L(100-250)	500	8	37	Cast Iron
Diesel Engine	XBC8/30-D	500	8	45	Cast Iron
Jockey	CDL 12-90	50	9	5.5	SS304
750GPM @ 10-BAR					
Pump	Model	Capacity(GPM)	Head(BAR)	Power(KW)	Material
Electric	XBD10/50-150L(150-315)	750	10	90	Cast Iron
Diesel Engine	XBC10/50-D	750	10	90	Cast Iron
Jockey	CDL 16-100	70	11	11	SS304

## Fire Hydrant Pillar & Valves

**Pillar:** A fire hydrant is a device connected to a pressurized water supply designated to supply water for firefighting during all phases of the fire.

**Valves:** A Fire Hydrant Valve is a pipe fitting that help to regulate, direct or control the flow of fire suppressing agents by opening, closing or partially obstructing passageways in the hose connectors.



## Fire Hose Reel & Cabinet

Fire hose cabinets come in, recessed, semi-recessed, surface mounted, and trimless varieties. Fire hose cabinets are designed to mainly hold hose rack units, however, some models have the ability to hold a 2½" valve or extinguisher or both.





## High Pressure Fire Hose

### Premium Quality Pressure Fire Hose Key Features:

Manufactured to Bs6391, Lloyds Register Approved, Oil & Chemical Resistant, Heat Resistant, Abrasion Resistant, Weather/Ozone Resistant, Maintenance Free, Red / White or Yellow, Choice of Lengths & Diameters Available with all International Couplings.



**FIRE HOSE TECHNICAL PARAMETERS**

Inner Diameter	Lining Material	Working Pressure	Burst Pressure	Hose Length	Coupling
1.5" (40mm)	EPDM Lined	10 BAR	20 BAR	100 (FEET)	YES
2.0" (50mm)	PU Lined	13 BAR	39 BAR	100 (FEET)	YES
2.5" (60mm)	Nitrile Rubber	16 BAR	48 BAR	100 (FEET)	YES

## Multipurpose, Jet Nozzle & Fire Monitor

Durable, Water Foam spray nozzle. engineered with aircraft-grade aluminum, stainless steel, comfort-grip soft rubber to withstand years of use. The couplings are made of aluminum alloy & gun Metal, hard coated to reduce corrosion and abrasion. Best quality Monitor Brass & Aluminum Flow rate 3000 L/min Work Pressure 5-12bar. All conform to the BS EN 336 standard.



## Fire Alarm System (Portable, Conventional)

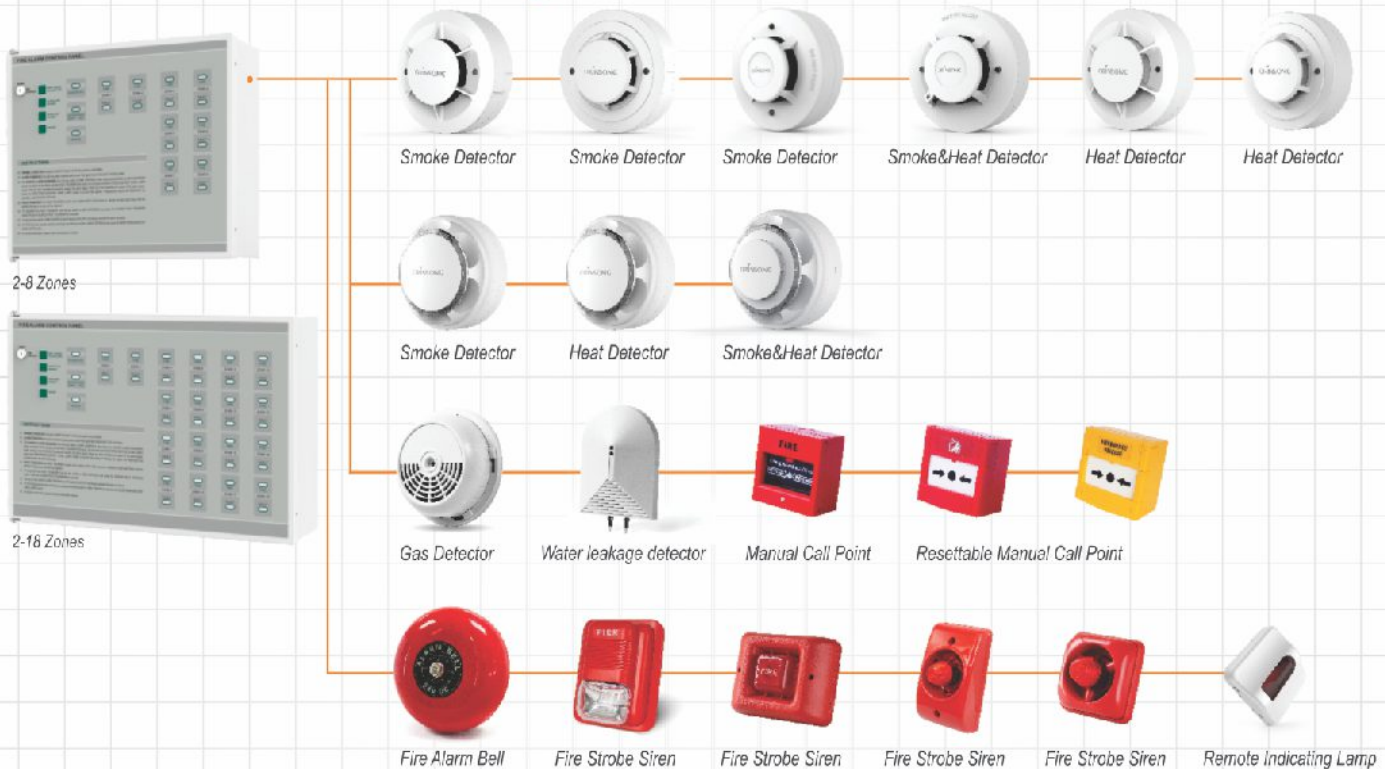
### Portable Smoke Detector



#### PORTABLE SMOKE DETECTOR

- MCU Automatic Processing Technology
- Manual Test
- Auto Reset
- Automatic Detection
- Infrared Photoelectric Sensor
- Sound-light Alarm
- Strong Adaptability For Circumstance
- SMT Design, High Stability
- Dust-proof, Insect-proof, Anti-visible Light

### Conventional Fire Alarm System





## Fire Alarm System (Addressable, Wireless)

### Addressable Fire Alarm System

An addressable fire alarm system is made up of a series of fire detectors and devices that are connected back to a central control panel. With addressable systems, each device has an address or location, enabling the exact detector that was triggered to be quickly identified.



### Wireless Fire Alarm System



Wireless Smoke Detector



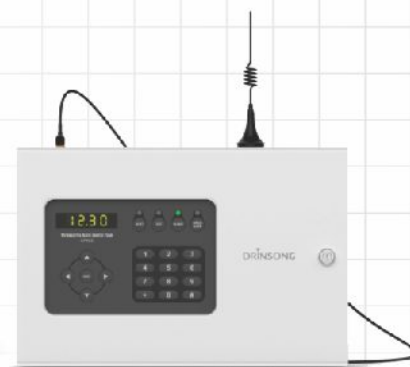
Wireless Manual Call Point



Wireless Strobe and Siren



Transmitter



Wireless Control Panel



#### SPECIFICATIONS

• Input Voltage	220V±10%V.a.c. 50/60Hz
• Internal power supply	12V/5.5Ah
• Communication frequency	433.92mhz, FSK
• Transmitted power	13dBm
• Transmission distance	≥200m for the open area
• Alarm function	LED, Speaker
• Panel Capacity	128 wireless terminals
• Operating Temperature	-5°C - 40°C
• Operating Humidity	10%-95% RH(Non coagulating)
• Dimension	350*230*88mm
• Weight(Without Battery)	4840g

## Fire Turnout Gear, Breathing Apparatus & Full Face Mask

Protect the firefighter from direct flame with selection of Globe Structural turnout gear. This NFPA-certified turnout gear consists of three layers of materials – made up of an outer shell, a moisture barrier, and a thermal liner. The drop-shoulder design jacket and roomy, low-rise pants come with a long list of standard features to make this far more than basic gear.



## Safety Helmet

Manufactured from quality and tough ABS or HDPE material. Excellent impact resistance that will not fall off rapidly at lower temperature. Large temperature range from -20°C to 80°C.



## Fire & Safety Shoes

When selecting footwear, you need to take into account several factors in addition to slip resistance, such as comfort, durability and any other safety features required, such as toe protection.



## Safety Goggles

Safety Glasses, are forms of protective eyewear that usually enclose or protect the area surrounding the eye in order to prevent particulates, water or chemicals from striking the eyes.



## Safety Gloves

Work gloves are meant to save the user's hands and fingers from unnecessary wounds such as cuts, blisters, splinters, skin punctures or heat and chemical burns.





## Emergency Eye Wash, Shower (Industrial, Portable)

Emergency Eyewash and Shower station be easily accessible in all workplaces in which a person could be exposed to injurious and/or corrosive substances. Emergency eyewash and shower stations should be used in the case of a laboratory or workplace accident that involves the spilling of a harmful, possibly corrosive chemical onto the body or the splashing of such a chemical into the eyes.



## Fire Blanket

A fire blanket is a safety device designed to extinguish incipient (starting) fires. It consists of a sheet of a fire retardant material which is placed over a fire in order to smother it.



## Sprinkler System

A fire sprinkler system is an active fire protection method, consisting of a water supply system, providing adequate pressure and flowrate to a water distribution piping system, onto which fire sprinklers are connected.



## Hooter/Siren

Use for audio signalling / Alarming a time or event like alarming an official activity in Industrial Use.



## Safety & Life Jacket

Safety & Life Jacket with Best Quality meet with your international requirement.





## First Aid Box

A first aid kit is a collection of supplies and equipment that is used to give medical treatment.



## Worker Uniform

Can Customize with your company logos.



## Dust Mask

Available with & without Filter



## Fire Point

4 Buckets with 1 Stand Complete Set



## Full Body Harness

With & Without Seat and Lanyard



## Fire Man Axe

Best Quality Axe for Electric Wire



## Shovel, Fire Beater

Shovel and Fire Beater



## Ear Muff

Ear Muff Best Quality



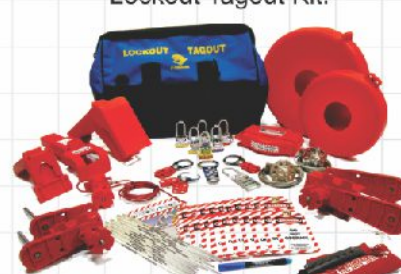
## Safety Signs/Light

Led Lights, Signs, & Plastic Waterproof Card



## Loto Kit

Electrical & Mechanical Lockout Tagout Kit.





## Security Products

A Huge Variety of Security Products



### Applications



### Features

- 18 detection zones
- 256 sensitivity levels
- 3.7" LCD display
- Counter for alarm and people
- Synchronous sound & LED alarm

## Metal Detector

Different Types Metal Detector with Best quality



## Security Barrier

Indoor Fingerprint Reader Swing Gate



## Walkie Talkie Set

VHF, UHF Walkie Talkie



## Biometric System

Biomatric Attendance, Security Door, etc.



## CCTV-Cameras

HDR, NVR, DVR, High Mega Pixel Cameras



## Road Safety Products

A Huge Variety of Road Safety Products



Revaluing Solar Light



Folding Barrier with & without coupling



Road Safety Barrier with & without coupling



Barricade Tape



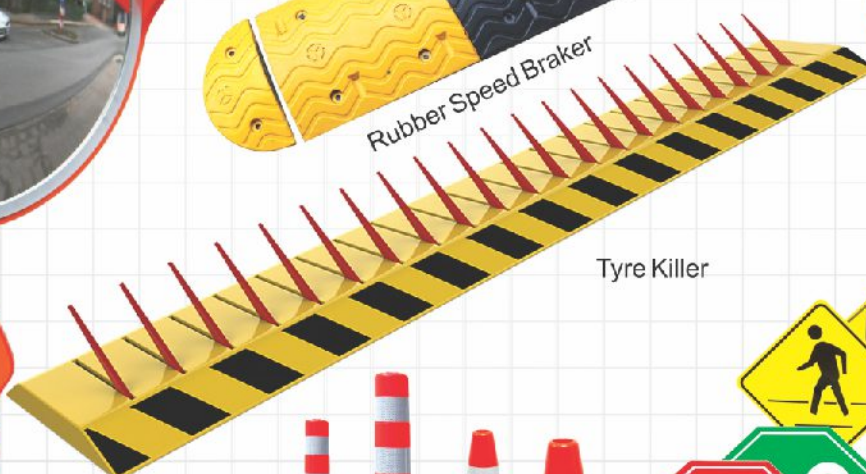
Rubber Speed Braker



Convex Mirror



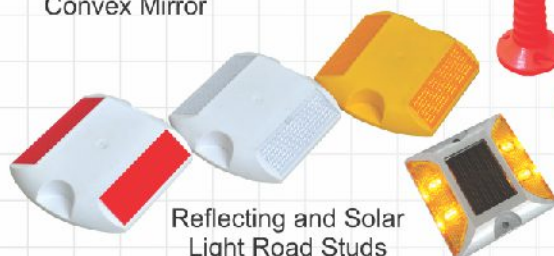
Convex Mirror



Tyre Killer



Warning Solar Light



Reflecting and Solar Light Road Studs



Road Safety Cone & Delineator



Road Safety Reflecting Signs Board



Fire Fighting Truck  
Rescue Van  
Ariel Platform  
Sewer Cleaning  
Suction Vehicle &  
Jetting Vehicle







# BestWAY

Traders (Pvt.) Ltd.  
Manufacturer, Importer, Exporter & General Order Supplier



Head Office:

Office No.3, First Floor, Ajwa Tower, Sanda  
Stop, Main Bund Road, Lahore-Pakistan.

+92 042 37140347  
0321-4277679 - 0300-4674533

bestwaytraderspk@gmail.com

www.bestwaytraderspk.com